



flotex® colour

The high tech textile

- Designs and colour
- Specials
- Segments
- Flotex facts
- Other Flotex options

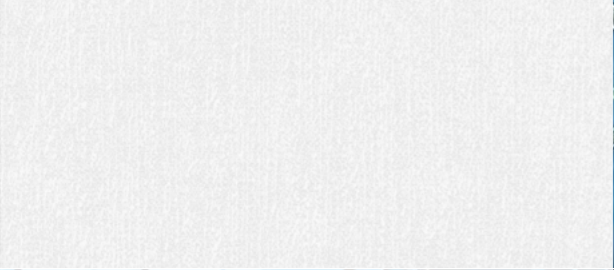
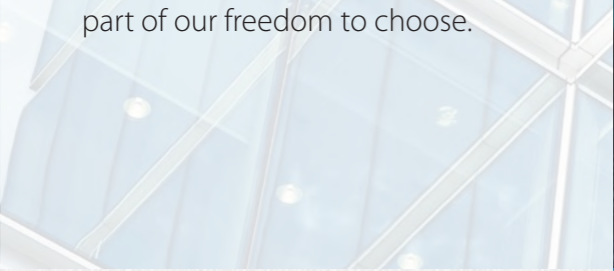
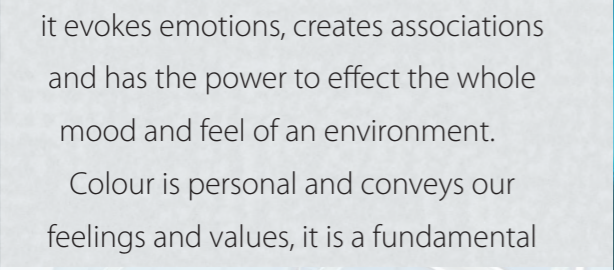
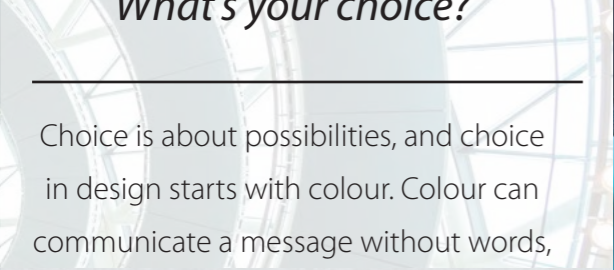
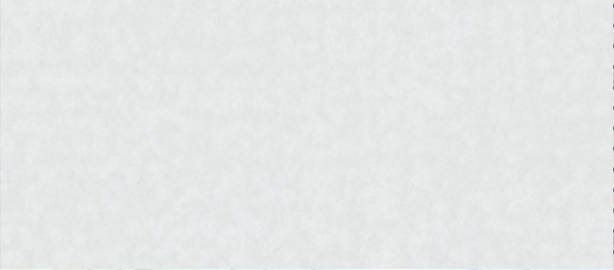
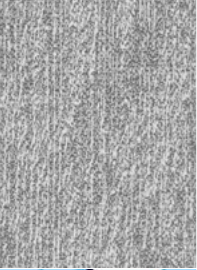
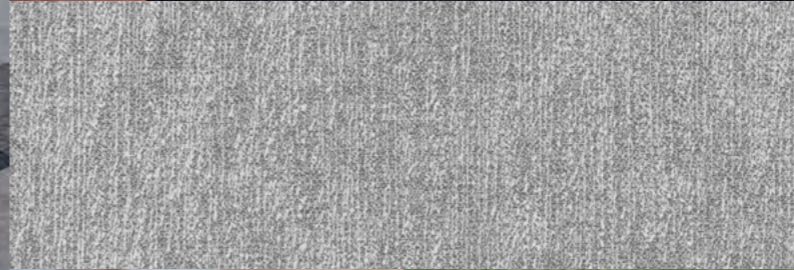
creating better environments

florbo
FLOORING SYSTEMS

flotex® colour...
What's your choice?

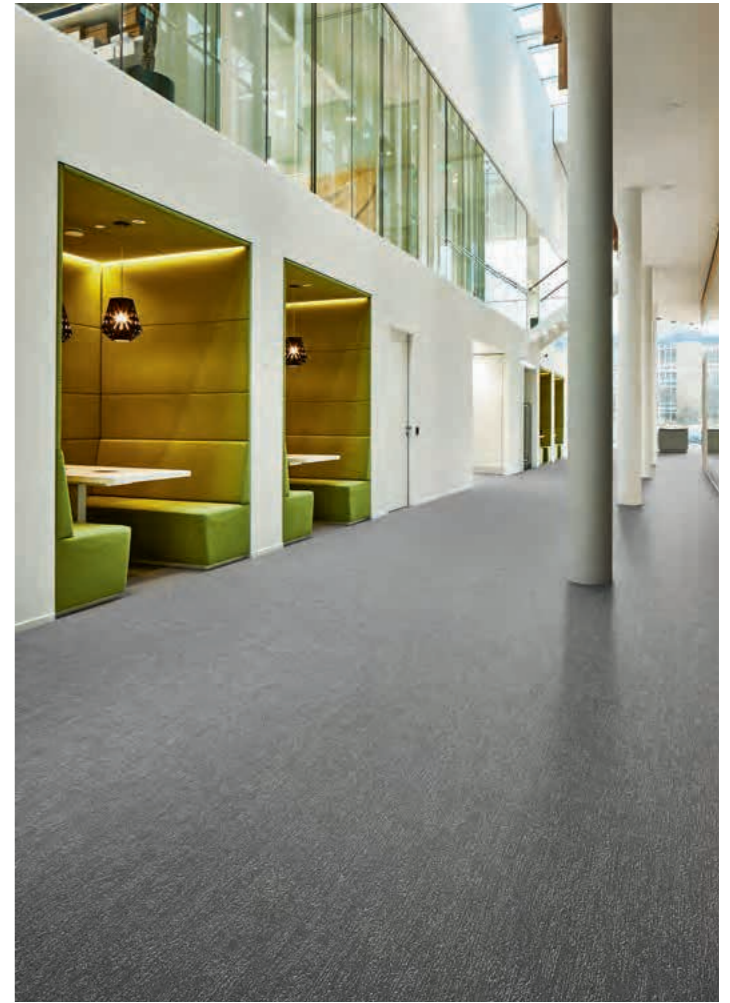
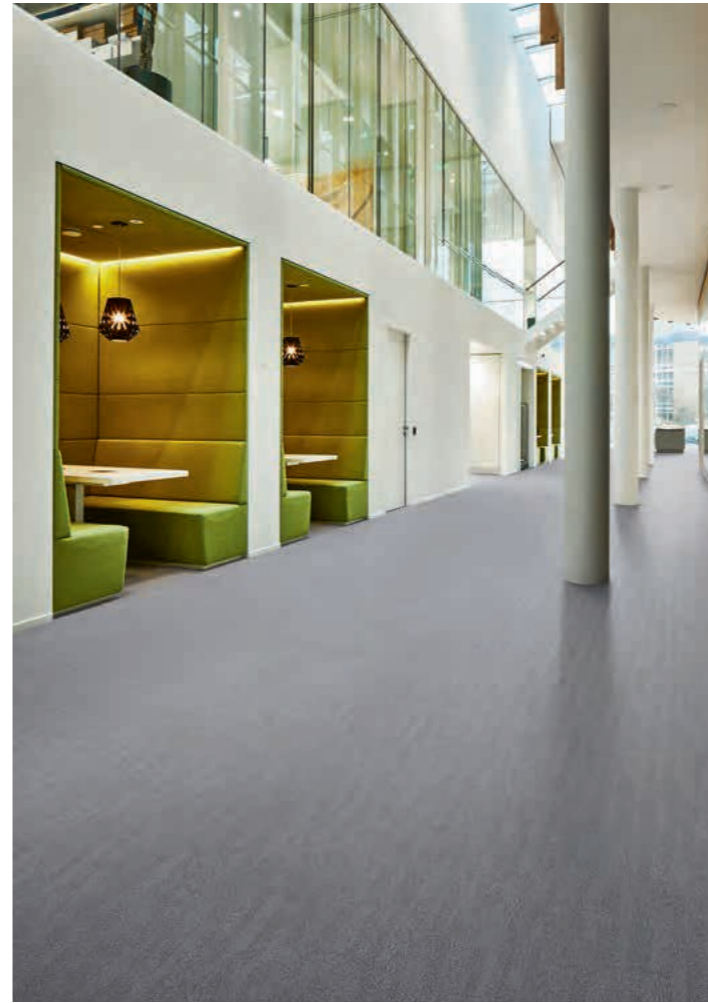
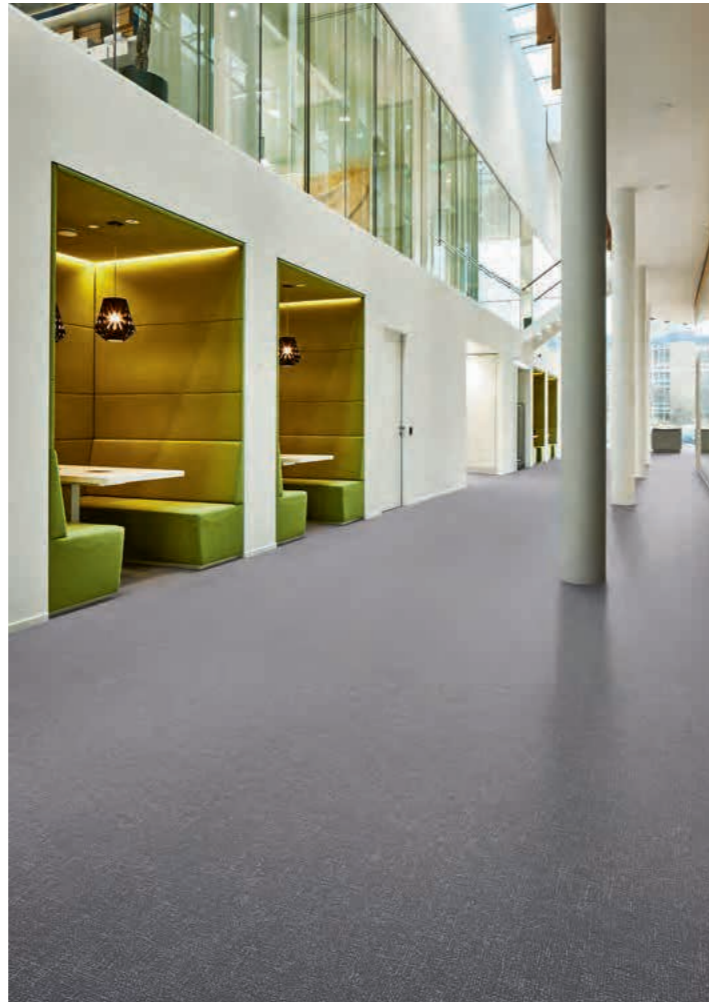
Choice is about possibilities, and choice in design starts with colour. Colour can communicate a message without words, it evokes emotions, creates associations and has the power to effect the whole mood and feel of an environment.

Colour is personal and conveys our feelings and values, it is a fundamental part of our freedom to choose.



flotex® colour

CALGARY | METRO | PENANG | CANYON



calgary

Flotex Calgary offers a wide range of colours in a soft, natural design that can easily be combined with other Flotex or resilient ranges like Marmoleum. Calgary is the perfect choice for application areas that require a muted ambiance.

metro

Flotex Metro is a versatile semi-plain floor design which covers a wide and modern colour bank. The understated pattern conveys texture without definite form, creating an authentic feel that is unique to Flotex flooring.

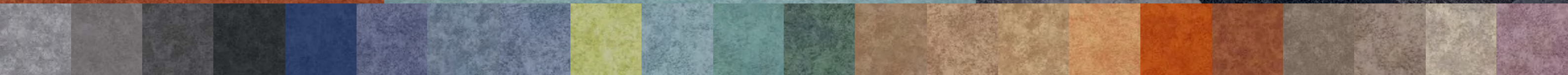
penang

Flotex Penang represents a stunning look for any modern environment. Its hint of the wooden planks design provides a quiet neutral floor design.

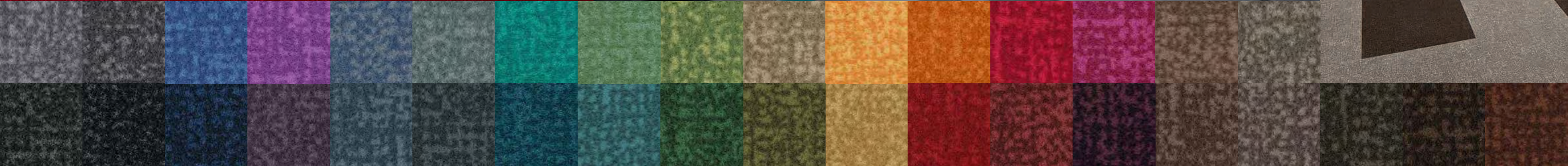
canyon

Flotex Canyon is a heavily grained semi-plain inspired by natural earth and rock. It has a distinctive strong texture with a medium contrast.

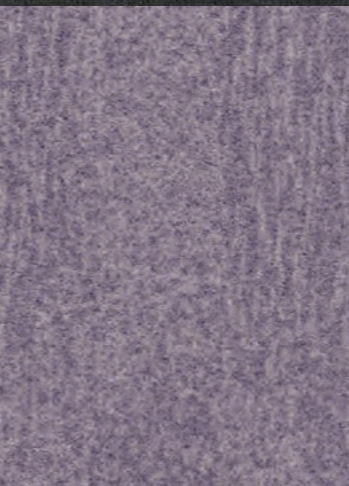
flotex® colour
CALGARY



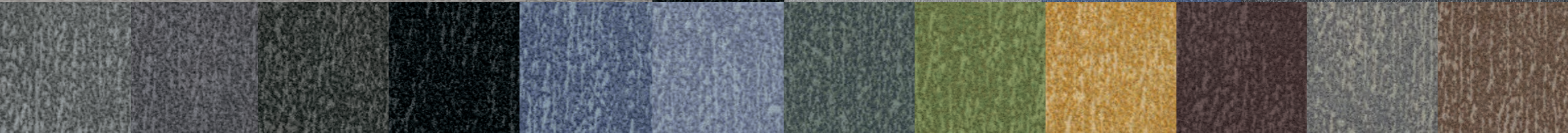
flotex® colour
METRO



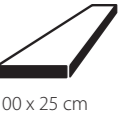
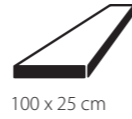
**flotex® colour
PENANG**



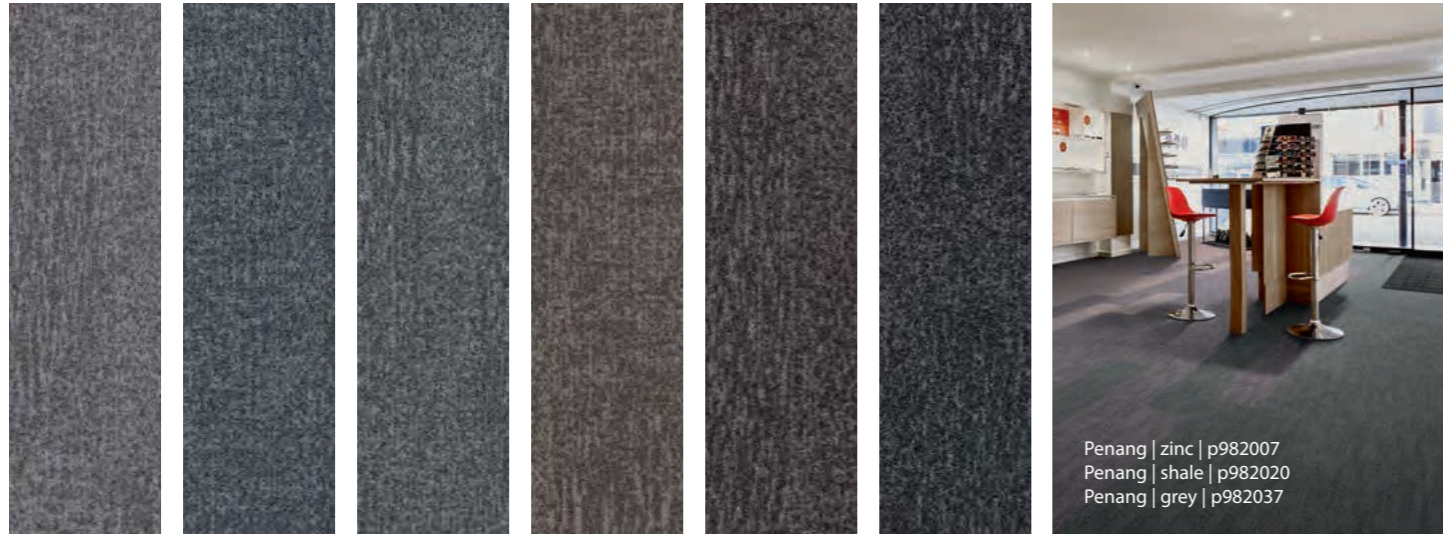
**flotex[®] colour
CANYON**



flotex® colour PLANKS



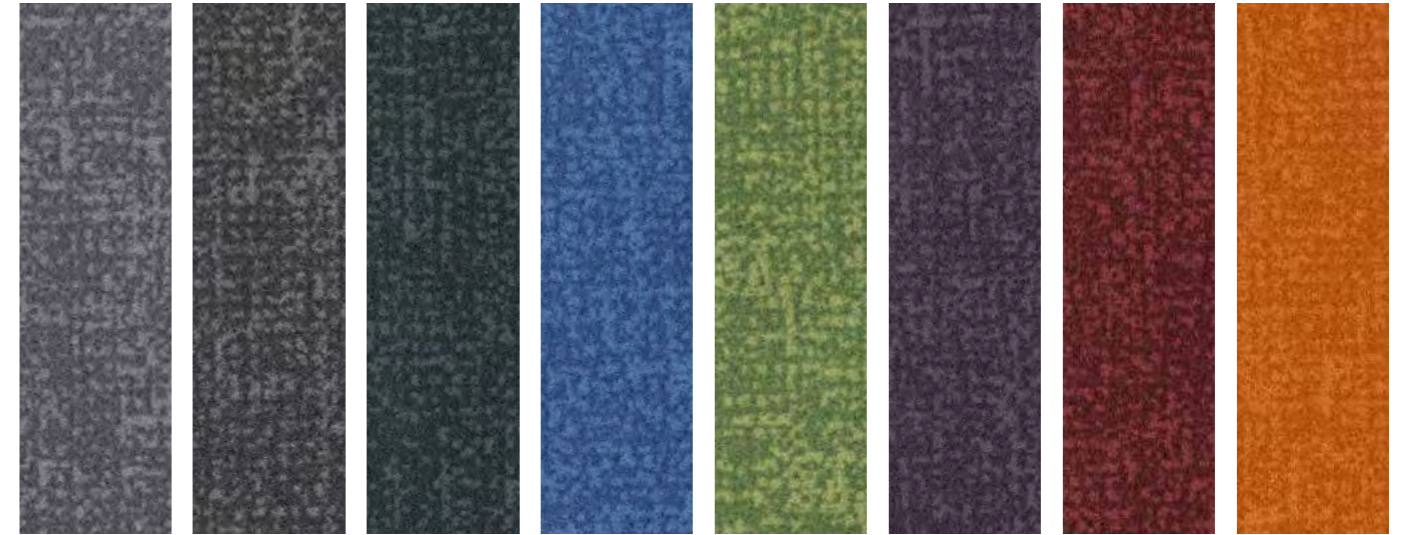
penang



Penang | zinc | p982007
Penang | shale | p982020
Penang | grey | p982037

nimbus mercury zinc shale grey ash

metro



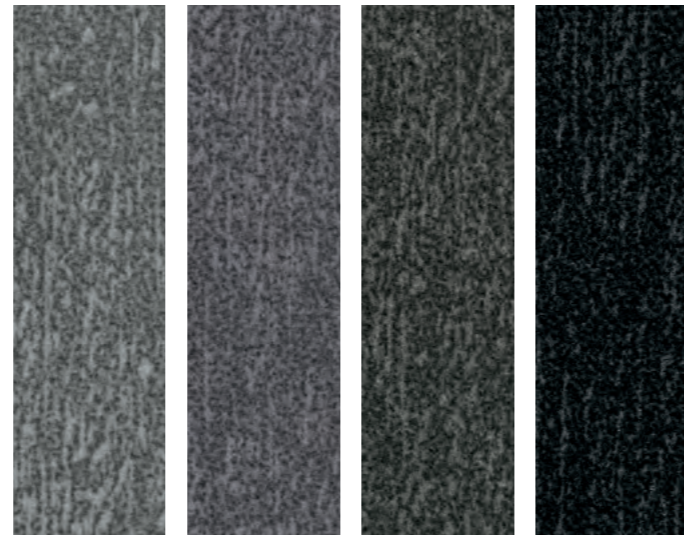
nimbus grey carbon lagoon citrus grape berry tangerine

calgary



carbon cement grey ash

canyon



limestone stone pumice slate



ash anthracite indigo petrol pebble pepper concrete red



Penang | mercury | p982004
Penang | zinc | p982007
Penang | nimbus | p982017
Penang | ash | p982031



Canyon | limestone | t545022
Allura Flex | light rustic oak | 1682



Metro | nimbus | p946005
Metro | grey | p946006
Metro | ash | p946007
Metro | lagoon | p946020
Metro | petrol | p946032
Metro | anthracite | p946039

flotex® colour EMBOSSING HIGHLIGHT



50 x 50 cm

Would you like to have areas of your floor that stand out? Think about the option to use tiles with embossing. This way you can play with the floor design and have areas or individual tiles be different from the rest. The below 12 items can be chosen with either the organic or glass embossing. All embossed Flotex has the same performance characteristics as any other Flotex.

Emboss glass

Inspired by glass this pattern is a random geometric that can be used to add a striking accent to an installation.



metro | pebble | t546011
metro | berry | t546017 | tg546517



metro | pebble | t546011
metro | berry | tg546517

Colour range



anthracite



gull



lagoon



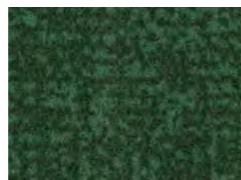
petrol



citrus



apple



evergreen



sand



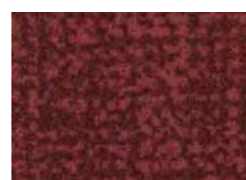
truffle



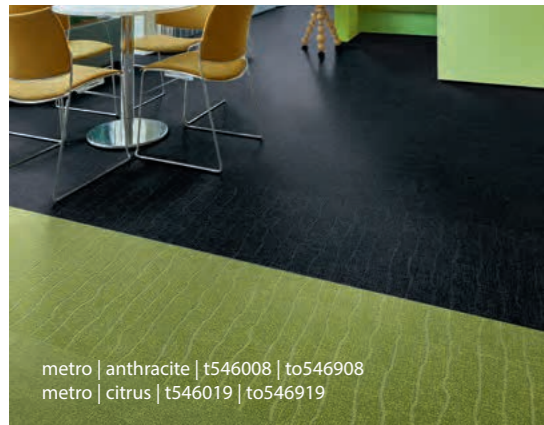
cinnamon



red



berry



metro | anthracite | t546008 | to546908
metro | citrus | t546019 | to546919



metro | anthracite | to546908

Emboss organic

This is a versatile pattern that gives a subtle effect bringing direction to the tiles without being too formal.

flotex® colour BORDERS



15 m x 11 / 22 cm

The Flotex borders help you to be creative when designing your floorspace by offering the ability to frame an area, separate spaces or provide an edge to your floor which a solid insert. Flotex borders are uni coloured strips only available in 11 or 22 cm widths, which can be used in combination with Flotex sheet.

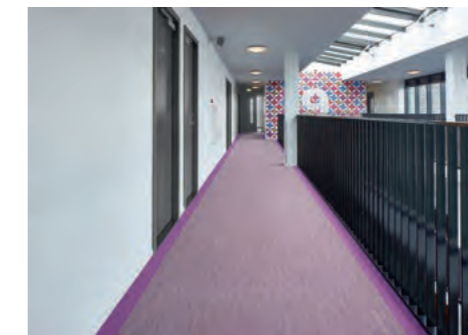
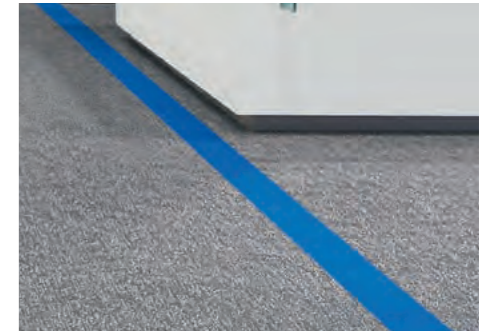
flotex® borders

nimbus	211044 232044	
grey	211046 232046	
ash	211031 232031	
tempest	211110 232110	
petrol	211007 232007	
indigo	211016 232016	
electric	211096 232096	
evergreen	211088 232088	
moss	211087 232087	
citrus	211085 232085	
gold	211099 232099	
pebble	211076 232076	
truffle	211093 232093	
cocoa	211081 232081	
melon	211072 232072	
tangerine	211003 232003	
lilac	211100 232100	
pink	211091 232091	
red	211008 232008	
berry	211083 232083	
cinnamon	211094 232094	
chocolate	211114 232114	

Flotex borders (roll length 15 metres) can be ordered in two width sizes. The first 3 digits of the colournumber indicate the width:

211xxx border 11cm

232xxx border 22cm



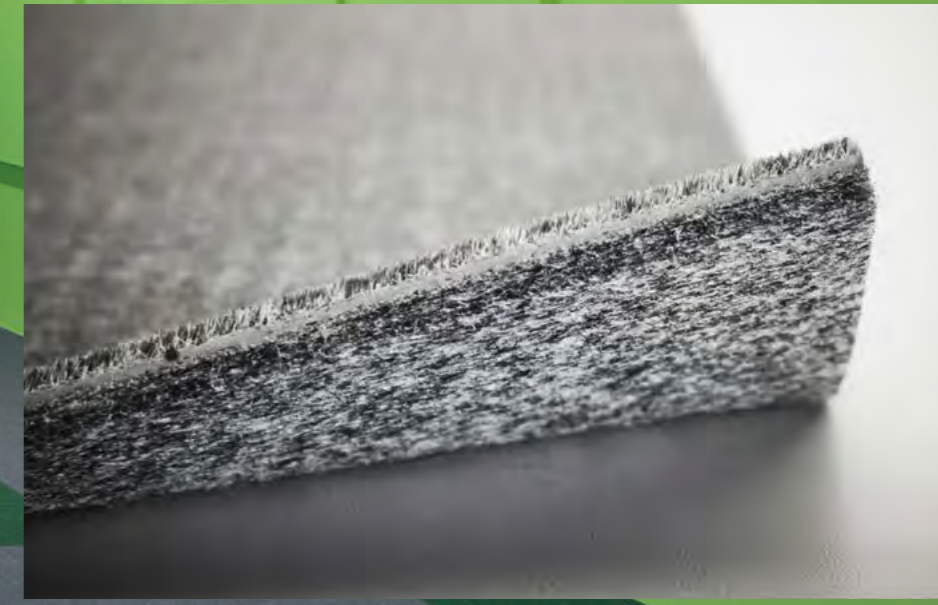
flotex® colour ACOUSTIC PLUS

Acoustic hinderence is number 2 in complaints about the work environment. Improved acoustic properties help to increase concentration.

For additional acoustic properties we can offer a special backing for our Flotex tiles that increases the impact sound reduction with 3dB to a total of 22dB. This will be an additional feature in for instance education, offices and public areas. The AcousticPlus can only be ordered for the tile items.

Flotex Acoustic Plus offers a good sound absorbtion of 0.25, which is comparable to most commonly used carpet sheet and tiles.

Next to sound absorbtion Flotex Acoustic Plus offers a very good shock absorbtion. This is relevant for areas where people are standing for a long time and where underfoot comfort is important.

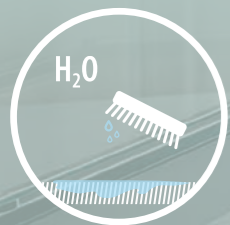


20% post consumer recycled polyester backing

The AcousticPlus can be ordered for all tiles as a special of 700m² per colour. AcousticPlus 746006 is a stocked item.

flotex[®] colour LEISURE & HOSPITALITY

Inviting and representative with visual appeal, that is what your restaurant, hotel or museum should be. The floorcovering can be a vital part of this. Acoustic and cleanability are vital, the floor design will do the rest.



WASHABLE

Flotex can be cleaned using water and a brush. It will not get slippery after cleaning and it dries quickly. So easy to keep your place clean.



Kurshi hotel, Latvia

flotex[®] colour EDUCATION

Creative and inspirational environments, that is what children need to learn and to develop. Besides playing and running they also need calm moments to concentrate. Flotex can offer it all. The colourful designs in this collection can create the ideal surroundings for kids to grow up.

Flotex has the properties of a smooth floor but the acoustic performance of a textile floor. It's also durable and excellent in capturing and releasing fine dust when vacuuming.



<22 dB

Impact sound reduction and 0.25 in room sound rating

Sound absorption in schools is the most important feature to keep the noise down and let pupils and teachers have a good day at school.



Chunnam library, Korea



flotex[®] colour CURE AND CARE

Feeling at home in a hospital or elderly care facility will help the healing and make people feel comfortable. When health care is needed, it better be in an environment that doesn't differ to much from what people are used to. Using Flotex can create that cosy and warm feeling. Being it easy to clean and safe to walk on is the additional benefit.



EXCELLENT SLIP RESISTANCE

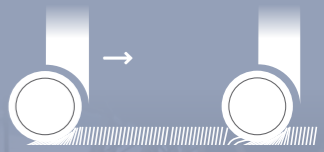
Flotex is safe to walk on even for people that are less stable on their feet. A safe feeling that adds up to the cosiness of the surrounding.



Erskine Court Care home, United Kingdom

flotex[®] colour OFFICE

Office designs require inspiration but also quietness in some places. You can play with Flotex whether you use the planks, tiles or sheet in combination with borders. Make your office the one to stand out and where everybody would like to work. The durable construction of Flotex will keep the floor as new. Impact sound reduction up to 22 dB is a plus as Flotex will bring the noise down even in open-space offices. In addition room acoustics can be improved with 0.25dB. It also has an ultra low emission, improving in-room health.



LOW ROLL RESISTANCE

Flotex has a low roll resistance so it is easy to use in offices. Because of its durable construction the fibres will return to their original position and the floor remains as new.



OLX office, Brazil



flotex[®] colour RETAIL

Retail stores nowadays need to offer that extra feature to attract people to come to the actual store. A good design, way finding, colour influence and comfort are important. With Flotex all requirements can be met. The easy to clean and durable construction make that it stays attractive for years to come.



MACHINE CLEANING

A safe, comfortable shopping environment with a floor that can be machine cleaned. Flotex can handle it and will last.

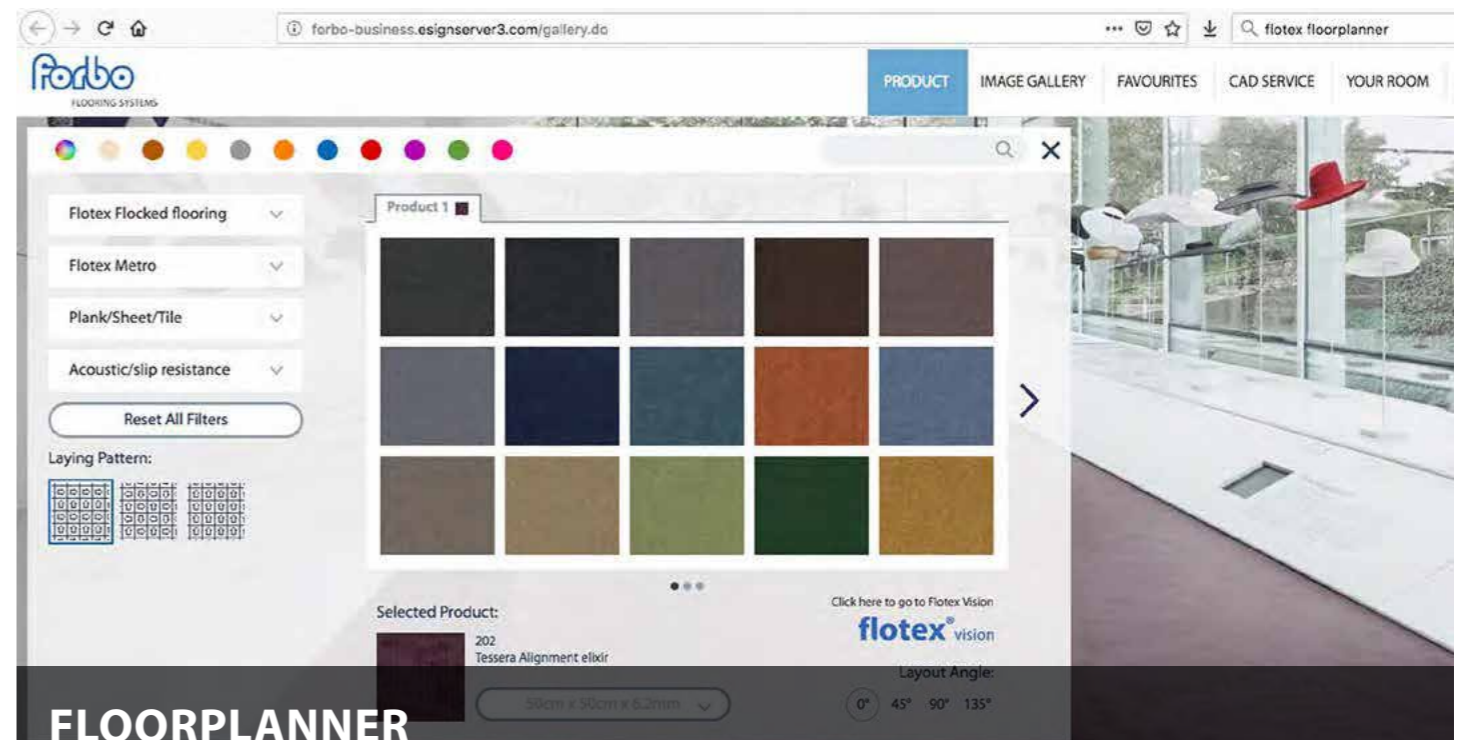
City 2 Shopping Centre, Denmark



FLOTEX VISION DIGITAL PRINT

With Flotex Vision, Forbo offers a unique collection of over 500 digitally printed designs in high level photographic resolutions. The designs are categorized into 6 themes, ranging from Floral patterns to realistic images of natural materials. All designs are available in multiple colour combinations. On this website you can find an example of each design in a certain colour combination. To show all 500 colour combinations, we've created a Flotex Vision Digital Library where you can see all designs & colour combinations and play with them in various room settings.

www.flotexvision.com



FLOORPLANNER

Do you want to visualize your floor, make use of our floorplanner. All collections are integrated and you can see how the design looks on a large full size scale.

www.forbo-flooring.com/floorplanner

flotex® THE HIGH TECH TEXTILE



≤ 22 dB
IMPACT SOUND
REDUCTION AND 0.25 IN
ROOM SOUND RATING



EXCELLENT
SLIP RESISTANCE



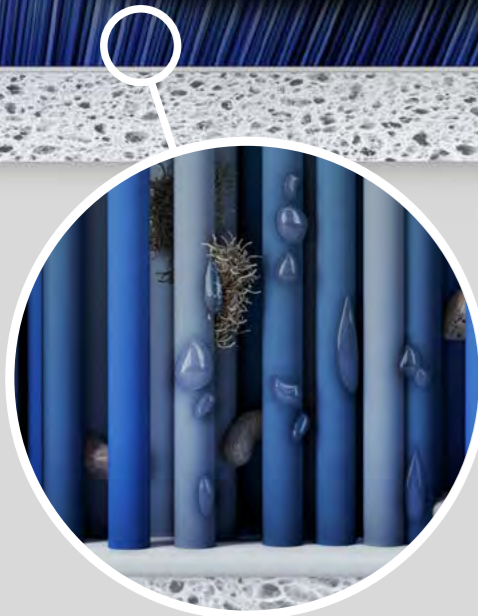
WASHABLE



MECHANICAL
WET CLEANING
POSSIBLE



THE ONLY TEXTILE FLOOR
COVERING TO RECEIVE THE
ALLERGY UK SEAL OF APPROVAL™



FLOTEX

The 80 million straight nylon fibres that are electrostatically flocked into the backing capture fine dust and allergens. The unique structure ensures these can be released when vacuumed. That is why Flotex is the only textile flooring with a British Allergy Foundation approval.

HYGIENIC

**30% MORE SOIL
REMOVAL THAN CARPET**



CARPET

Loop pile carpet or loose nylon cut pile fibres retain fine dust and allergens, however, they're not easily released due to the complex nature of the surface pile, resulting in bacterial growth and an unhygienic floor.

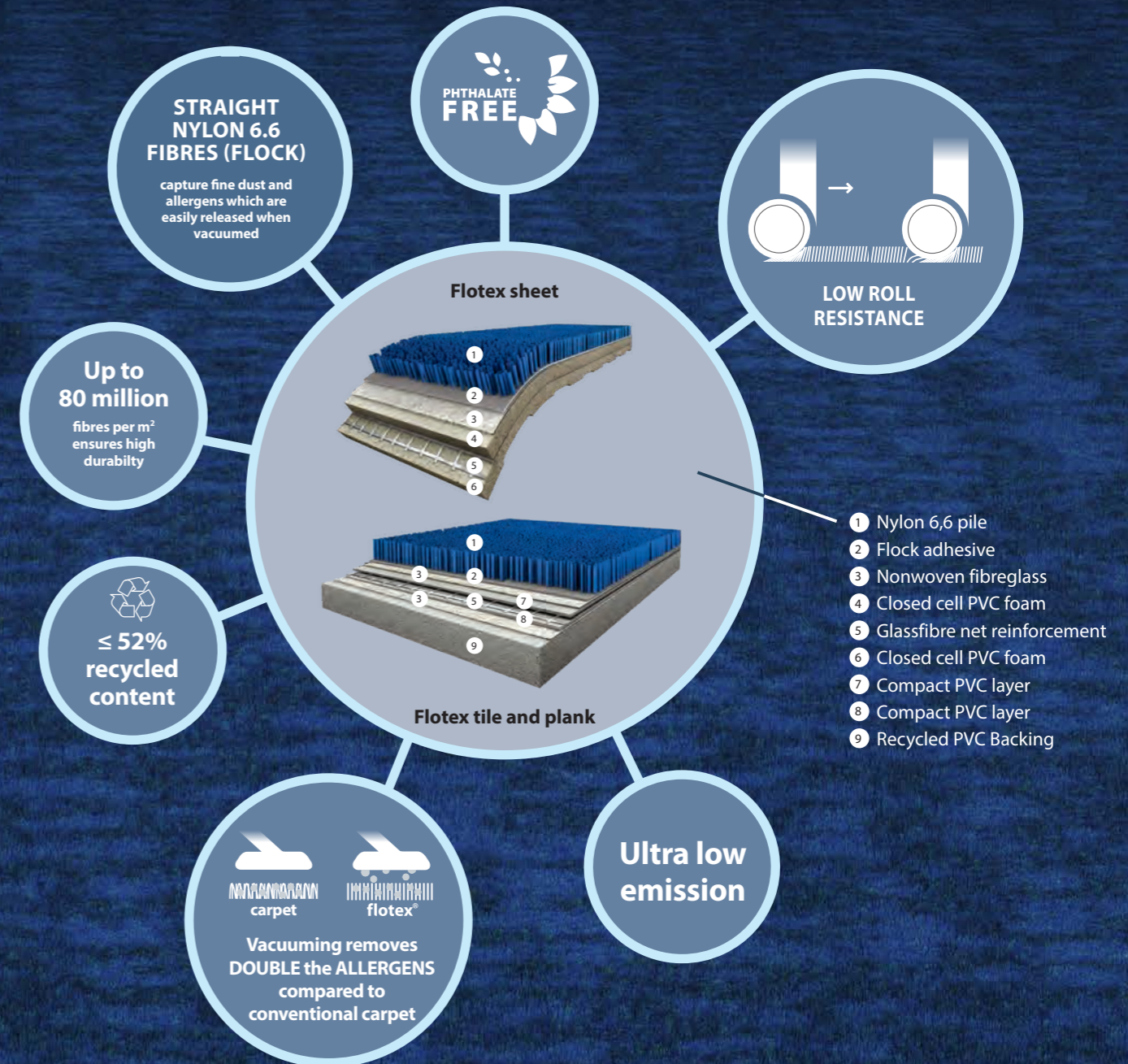
Flotex is different from other textile floor coverings due to its unique construction. By combining a high density flocked surface with a heavy duty resilient foundation Flotex offers the best of both worlds.

Durable and comfortable

Discover the toughness and durability of Flotex which comes as a result of the up to 80 million nylon 6.6 fibres per square metre. Additionally these fibres offer the experience of quietness and comfort normally only associated with a carpet.

Quiet and good indoor air

The fibres not only perform in sound absorption (>20dB) and comfort, they also capture allergens and fine dust from the air. The good thing is that they also effortlessly release it during cleaning, both dry and wet. This secures a good indoor air quality, which is especially important for allergy sufferers. The seal of approval from the British Allergy Foundation confirms this.

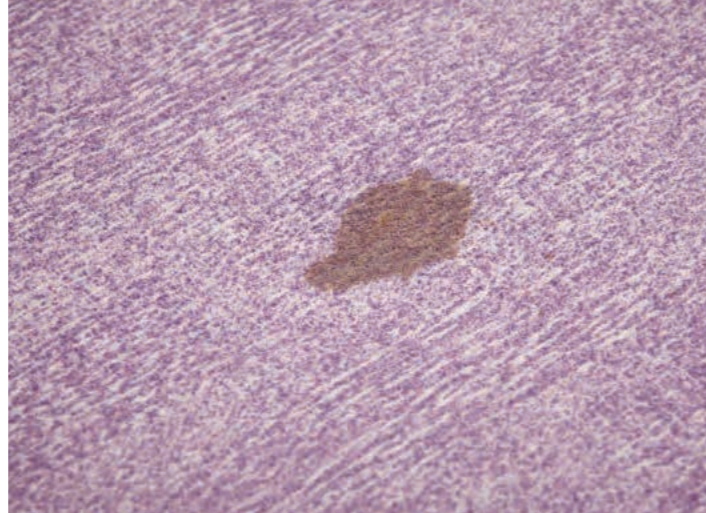


flotex[®] colour CLEANING AND MAINTENANCE

Always use an Entrance mat to keep as much dirt out of the building and keep the floor looking good for longer.

Spot cleaning

Many kinds of spills can be removed with just clean warm water or a carpet detergent. The heavy and more stubborn spills can be removed using a paint scraper and a brush.



Regular cleaning

Vacuuming and stain removal keeps Flotex looking good every day.



Maintenance

A periodically maintenance using a rinse, brush and water vacuuming machine / 3 in 1 machine will guarantee the best result on Flotex.



Contact Forbo Flooring Systems or our website for detailed
Cleaning & Maintenance instructions

OTHER FLOTEX COLLECTIONS



FLOTEX LINEAR

Flotex Linear flocked flooring offers a stylish display of 5 individual linear designs that can be used in various installation types. The Flotex linear collection is colour coordinated between the ranges and can be combined to create exciting floor designs. Sheet and tile varieties of the collection give room for additional combinations.



FLOTEX CITYSCAPE

The embossed lines in Flotex Cityscape create an intriguing 3 dimensional floor design that changes in the light from whatever angle you look at it. This unique flocked tile range is inspired by the lines and intersections of the urban landscape. The grid like patterns which are embossed in the nylon fibers create a tactile & comfortable floor. Cityscape comprises the sophisticated linear Integrity design and the multicoloured Complexity design.



FLOTEX VISION

Flotex Vision offers a unique collection of over 500 digitally printed floor designs, ranging from Floral patterns to realistic images of natural materials. To view all designs and colour combinations in room scenes, please visit our Flotex vision website www.flotexvision.com



FLOTEX BY STARCK

Forbo Flooring Systems collaborated with visionary creator Philippe Starck in designing a highly innovative collection of floor covering systems: Flotex by Starck. Philippe Starck created a collection of 3 systems, named Vortex, Artist and Twilight. Each of them comes in four separate parts that can be freely arranged to create patterns for your project that adapts to your needs and preferences.



FLOTEX BESPOKE

When you have your own idea for a flooring design, have it printed on Flotex. We can make the design for you and print it on our machines. You can play with logo's, colours and matching prints. Let your imagination guide you.



FLOTEX TIBOR

Pioneering textile designer Tibor Reich - creator of Tibor - was one of the most prominent figures in the British post-war textile industry. Forbo has teamed up with this British design legend on an exciting new flooring range. Most of the designs are derived from Tibor's ground-breaking Fotexur collection, launched in 1957. Printed on Forbo Flotex in vibrant colours, Tibor's innovative Fotexur designs have a timeless feel, despite dating back 70 years.



FLOTEX PLANKS

In the trends of modular flooring our Flotex planks designs can help you create trendy floors that distinguish from any other design. You can play with designs, colour and installation patterns.



FLOTEX SOTTASS

Ground breaking both aesthetically and technically. Flotex Sottsass flocked flooring is the result of a creative collaboration between Forbo Flooring and the Italian design studio Sottsass Associati which is responsible for the famous Memphis Design trend at the end of the last century. The Sottsass designs present unique organic forms and irregular, apparently random patterns.

